



HYDRA

SELF-CLEANING FILTERS
WITH BACK-WASH

HYDRA

Self-cleaning filters with back-wash

HYDRA self-cleaning filters have been designed with innovative solutions regarding the efficiency of the system for the self-cleaning of the cartridge, thanks to newly designed back-wash on counter-current which grants the highest particles removal from the cartridge. When the cartridge is to be cleaned, the cleaning operation with back-wash is simply operated by opening the discharge ball valve at the filter bottom. That operation causes a pressure-drop which pushes the cartridge downward the housing bottom and reverses the water flow from the outer to the inner side of the cartridge. It is that counter-current back flow which washes away to the discharge the impurities trapped onto the outer side of the cartridge. The filters perform 90 micron filter rate with stainless steel net cartridge or plastic net cartridge and 50 micron filter rate with pleated plastic net cartridge.



MIN 1.8
BAR

MAX 8
BAR

+45
+4
°C

SPECIFICATIONS

Non-toxic materials, suitable for drinking water, in compliance with the UE "Directive 98/83/EC".

Head: reinforced polypropylene.

Bowl: PET.

O-ring: EPDM.

Breather-valve: body stainless steel, O-ring EPDM.

IN/OUT threads: CW 614 N brass inserts.

RAH cartridge: stainless steel net AISI 316, frame and end caps polypropylene.

RLH cartridge: polyester net, frame and end caps polypropylene.

RSH cartridge: polypropylene pleated net, frame and end caps polypropylene.

Cartridges spring: stainless steel AISI 316-L.

Discharge ball-valve: CW 614 N brass.

Discharge hose-holder: nylon.



HYDRA-RAH



HYDRA-RLH



HYDRA-RSH

BENEFITS OF HYDRA SELF-CLEANING FILTERS

Free from frequent operation of filter opening and cartridge washing, with all the related operation: water mains turn off - turn on, interruption of the water delivery, water flood when opening the filter, just open and close the discharge valve and get a clean filter in a while.

Perform self-cleaning with back-wash operation and ensure the best removal of particles from the cartridge surface with the counter-current flow, which pushes the particles to the discharge.

Water is delivered even during the self-cleaning operation, with no interruption of the water supply.

model	IN/OUT connections	cartridge type	filtration micron	maximum flow rate l/h @ 3 BAR	pressure drop BAR @ maximum flow rate	pressure drop BAR @ maximum flow rate	
						A	B
HYDRA 1/2 - RAH 90 mcr	1/2"	stainless steel net	90	3800	0,41	120	365
HYDRA 3/4 - RAH 90 mcr	3/4"	stainless steel net	90	5300	0,41	120	365
HYDRA 1 - RAH 90 mcr	1"	stainless steel net	90	6000	0,41	120	365
HYDRA 1 1/4 - RAH 90 mcr	1" 1/4	stainless steel net	90	8000	0,41	120	390
HYDRA 1 1/2 - RAH 90 mcr	1" 1/2	stainless steel net	90	10000	0,41	120	390
HYDRA 1/2 - RLH 90 mcr	1/2"	polyester net	90	3800	0,44	120	365
HYDRA 3/4 - RLH 90 mcr	3/4"	polyester net	90	5300	0,44	120	365
HYDRA 1 - RLH 90 mcr	1"	polyester net	90	6000	0,44	120	365
HYDRA 1 1/4 - RLH 90 mcr	1" 1/4	polyester net	90	8000	0,44	120	390
HYDRA 1 1/2 - RLH 90 mcr	1" 1/2	polyester net	90	10000	0,44	120	390
HYDRA 1/2 - RSH 50 mcr	1/2"	pleated polypropylene net	50	3800	0,43	120	365
HYDRA 3/4 - RSH 50 mcr	3/4"	pleated polypropylene net	50	5300	0,43	120	365
HYDRA 1 - RSH 50 mcr	1"	pleated polypropylene net	50	6000	0,43	120	365
HYDRA 1 1/4 - RSH 50 mcr	1" 1/4	pleated polypropylene net	50	8000	0,43	120	390
HYDRA 1 1/2 - RSH 50 mcr	1" 1/2	pleated polypropylene net	50	10000	0,43	120	390



Remark: maximum flow rate values are experimentally obtained at Atlas Filtri testing laboratory with specific testing devices, using new, clean filters, under the following testing conditions:
 - inlet pressure: 3 BAR - inlet water temperature: 10°C - room temperature: 20°C - raw water: potable water from municipal supply

cartridges assortment

accessories included



RAH cartridge 90 micron stainless steel net AISI 316



RLH cartridge 90 micron polyester net



RSH cartridge 50 micron pleated polypropylene net



-X- Spanner



-S- wall bracket wall bracket screws

spare parts

variant

variant available on minimum quantity



Stainless steel AISI 316-L spring for cartridges RAH, RLH, RSH



housing O-ring



Brass discharge ball-valve with gasket



Plastic hose-holder

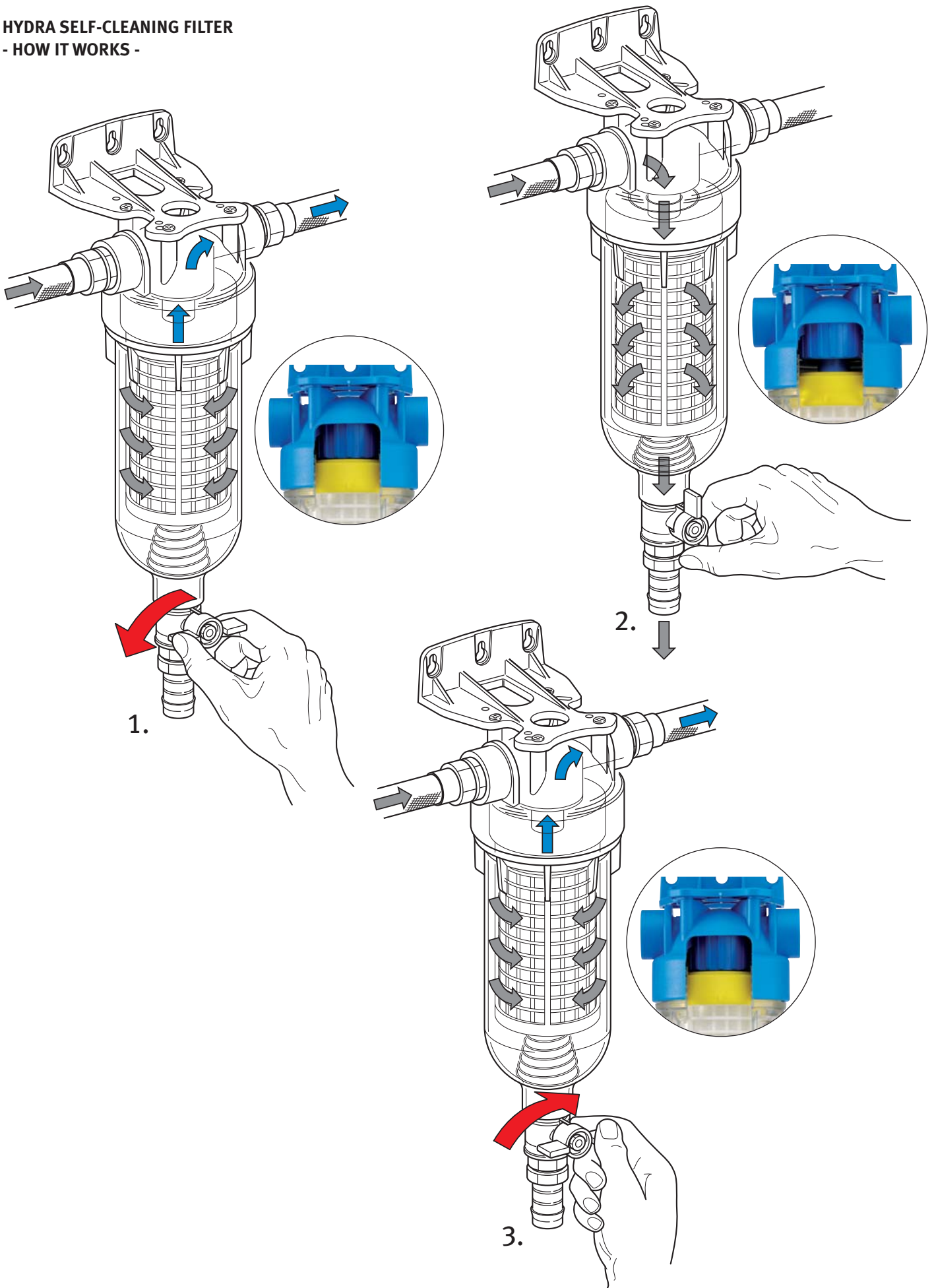


Brass hose-holder



IN female plastic in/out threads 1/2", 3/4", 1", 1 1/4, 1 1/2

HYDRA SELF-CLEANING FILTER
- HOW IT WORKS -



R02-05/09. Subject to change without notice

